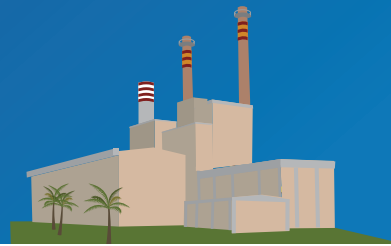




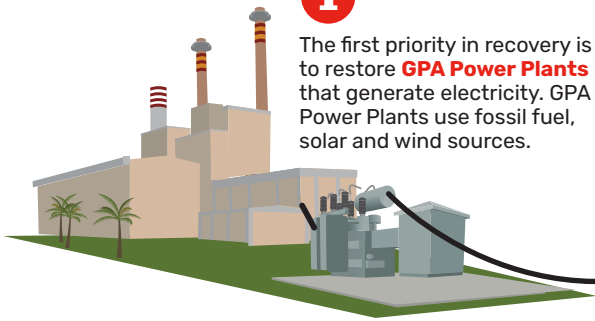
How power is restored after tropical storms and typhoons



In order to restore power to your home as quickly as possible, GPA must repair all the components illustrated here. The numbers represent GPA's order of priority for restoration of power after major storms.

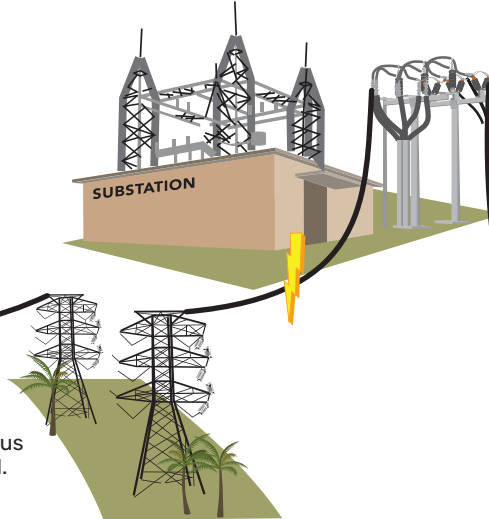
1

The first priority in recovery is to restore **GPA Power Plants** that generate electricity. GPA Power Plants use fossil fuel, solar and wind sources.



2

The **transmission lines** route the power from the plants to the various substations throughout the island.



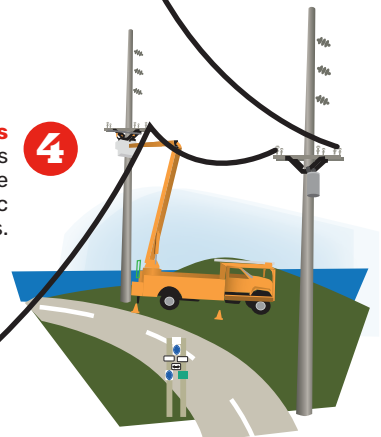
3

When the **high-voltage electricity** reaches one of the **GPA Substations**, the voltage is lowered so it can be sent to smaller transformers on poles or concrete pads for servicing homes or other buildings via the distribution system. These substations are located in villages all over the island.

Service lines from the power pole to the service connection may have been damaged from high winds during typhoons or storms. GPA maintains these lines, but homeowners must maintain proper service connections. (See the illustration to identify what type of service connection you have and learn what your responsibilities are.)

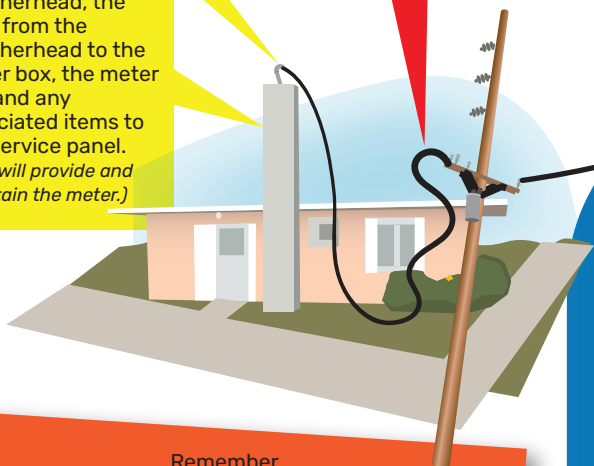
Distribution Lines and power poles that run along neighborhood streets are next. These lines carry the electricity to homes, buildings, traffic lights, and street lights.

4



5

Proper service connection that homeowners must maintain are the weatherhead, the lines from the weatherhead to the meter box, the meter box and any associated items to the service panel. (GPA will provide and maintain the meter.)

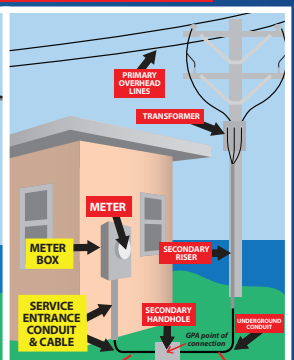
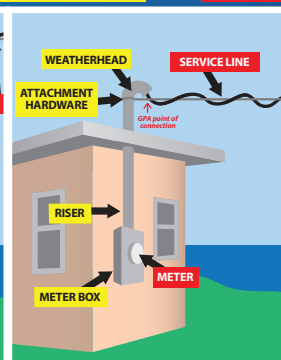
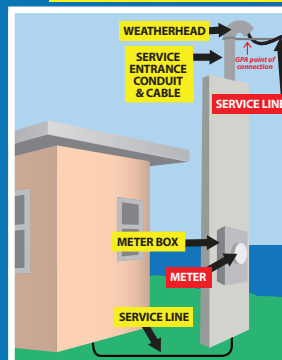


Who is Responsible for Fixing What?

If your electrical components are damaged, you may be responsible for repairs. Identify your type of service connection below to learn more.

CUSTOMER'S RESPONSIBILITY

GPA'S RESPONSIBILITY



Remember, HIGH VOLTAGE KILLS

Downed or dangling power lines can cause electrocution

After the storm passes, look around and be alert for fallen power lines. Consider ALL fallen lines to be "live" to avoid severe injury or death.

Electricity travels through standing water and can cause electrocution

Avoid flooded areas even if they are shallow. Don't step into water in case a downed power line is touching it. Remember, the power line may be some distance away or even out of sight.

Want to learn more?
guampowerauthority.com

SERVICE LINE -
CUSTOMER RESPONSIBILITY

SERVICE CONDUCTORS -
GPA RESPONSIBILITY